



THE VICTORIA at OAKMONT

THE VICTORIA - VICTORIA - FARMHOUSE MODERN

4 Bedrooms • 3 Bathrooms • 3-Car Garage • 2,870 ft² Living Area • 4,084 ft² Under Roof

The Victoria floor plan is a spacious two-story home with 2,870 square feet, offering four bedrooms, three baths, and versatile living spaces. The open-concept main floor includes a deluxe kitchen, dining area, and a covered lanai, perfect for both family time and entertaining. A flex room and a guest bedroom provide adaptable options for modern living. Upstairs, the master suite serves as a luxurious retreat with a spacious bath and walk-in closet. With ICI Homes' exceptional customization options, the Victoria can be tailored to fit your unique lifestyle and design preferences.

* Renderings may vary from actual home. Please see disclaimer for more details.

\$1,552

ESTIMATED SAVINGS



This home has a HERS Score of 60 and is estimated to save you \$2,973 on your annual utility bills vs. a resale home.

THE VICTORIA

4 Bedrooms • 3 Bathrooms • 3-Car Garage

Oakmont
Gainesville, FL

Available In
Oakmont 80

Living Area: 2,870 ft² Under Roof: 4,084 ft²

THE VERNACULAR



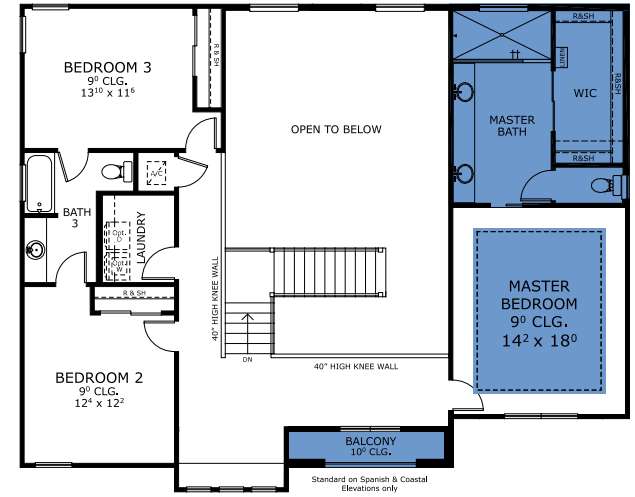
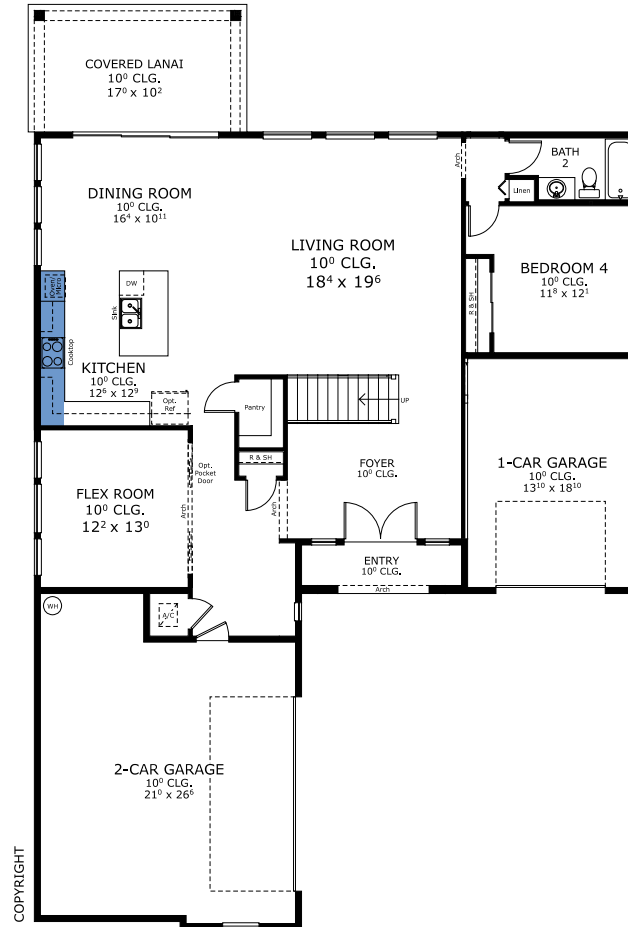
THE CRAFTSMAN MODERN



THE COASTAL MODERN - PC



FIRST-SECOND FLOOR



Customize this plan, it's easy! (844) 349-6401 or visit [ICIHomes.com](https://www.ICIHomes.com)

©1994-2026 ICI Homes™ is a registered trademark whose divisions operate under CBC1267313, CBC1262114, CBC1262120, CBC1264300, CBC1265743, CRC1333091, and CBC1257263. Features may be plan specific and vary. Please consult a Sales Associate for specific feature information. All new ICI Homes come with a HBW 2-10 warranty. Certain elevations may have additional fees. Prices may not include lot premiums, upgrades, and options. Inventory home completion date may vary. All prices subject to change without notice. All plans are property of ICI Homes and cannot be copied or used without permission. Prices, promotions, incentives, features, options, amenities, floor plans, elevations, site maps, designs, materials, and dimensions are for illustrative purposes only and subject to change without notice. Plans should not be relied upon as representation express or implied of final sizes, locations, features or dimensions. Square footage and dimensions are estimated and may vary from description. All HERS ratings and savings are calculated by a third party energy rating service. Actual savings will depend on a number of factors, including but not limited to daily activities, home maintenance practices, household size, use of appliances, lighting and internal climate control systems, lot orientation, and surrounding climate and weather conditions. Created on 07/11/2026: _____ Garage Orientation R / L: _____

