



## THE SANTA CRUZ at SILVERLEAF

THE COASTAL

BEING BUILT

**4 Bedrooms • 3.5 Bathrooms • 2-Car Garage • 2,729 ft<sup>2</sup> Living Area • 3,515 ft<sup>2</sup> Under Roof**

The "Santa Cruz" floor plan invites you into a spacious, two-story home with 4 bedrooms, and 3.5 bathrooms. The main floor's open layout includes a welcoming foyer, a flexible room for a home office, and a connected kitchen, dining, and living area. The secluded master suite offers privacy, complete with a luxurious bath and a large walk-in closet. Upstairs, a game room and three additional bedrooms provide ample space for family or guests. With ICI Homes' customization options, "Santa Cruz" is crafted to adapt perfectly to your lifestyle.

\* Renderings may vary from actual home. Please see disclaimer for more details.

**\$1,674**

ESTIMATED SAVINGS



This home has a HERS Score of 60 and is estimated to save you \$3,169 on your annual utility bills vs. a resale home.

# THE SANTA CRUZ

4 Bedrooms • 3.5 Bathrooms • 2-Car Garage

BEING BUILT

## Silverleaf

Classic Series | 50' Wide Lots | Courtney Chase - Lot 183

271 Courtney Chase Drive  
St. Augustine, FL, 32092

Living Area: 2,729 ft<sup>2</sup>

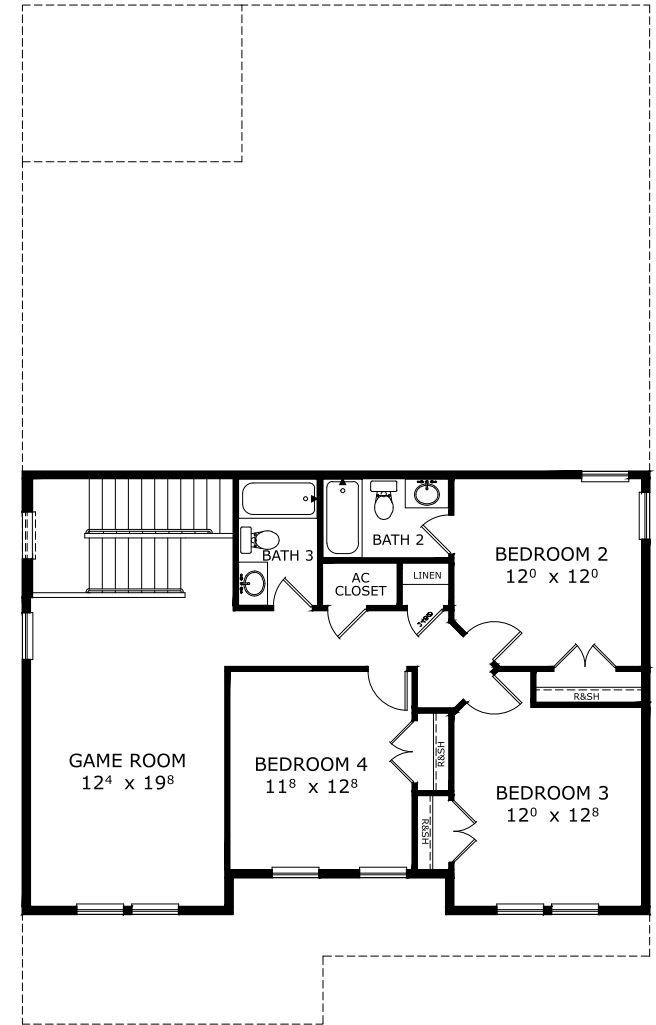
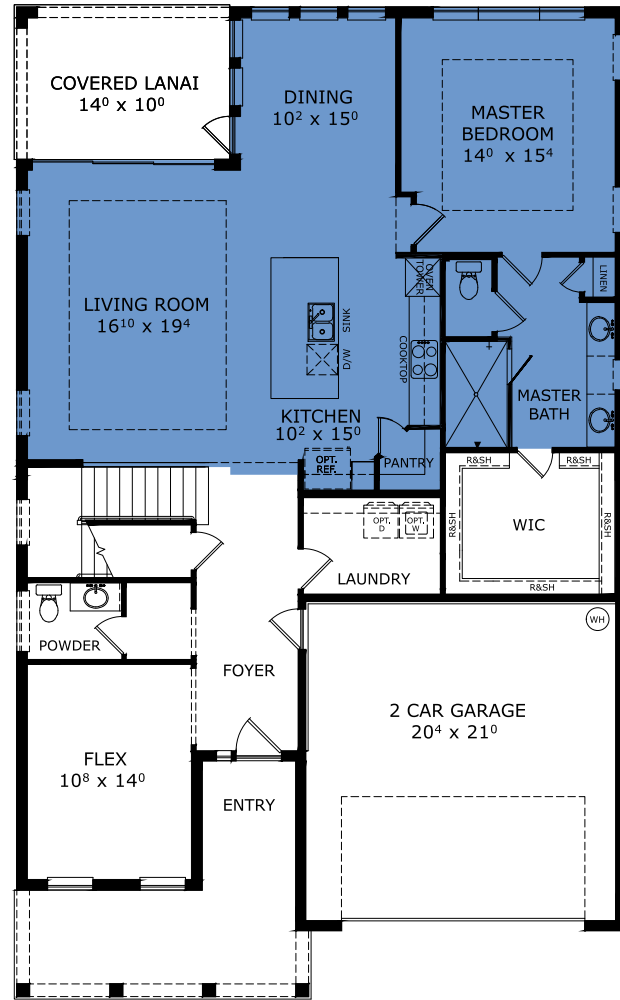
### Structural Options Included in This Home:

- ✓ Garage-3 Car Front Entry
- ✓ Shower ilo Guest Tub @ Bath Alt
- ✓ Kitchen Deluxe - NFD
- ✓ Kitchen Island Alternative
- ✓ Ceiling 12 @ Kitchen/Living/Dining
- ✓ Tray Ceiling - Living Room
- ✓ Tray Ceiling - Master Suite
- ✓ Outlet-Floor Plug Brass
- ✓ Sink-Rough In
- ✓ 3rd Car Option- Front Entry
- ✓ Open ended Treads at stairs.
- ✓ Delete Master Bathroom Knee wall at Shower.
- ✓ 60" Lanai Wall. See Red Lines.

And much more....

Priced at: **\$794,763**

## FIRST-SECOND FLOOR



This Santa Cruz is a Being Built! [Speak to a Sales Counselor \(844\) 349-6401](https://www.icihomes.com) or visit [ICIHomes.com](https://www.icihomes.com)

©1994-2026 ICI Homes™ is a registered trademark whose divisions operate under CBC1267313, CBC1262114, CBC1262120, CBC1264300, CBC1265743, CRC1333091, and CBC1257263. Features may be plan specific and vary. Please consult a Sales Associate for specific feature information. All new ICI Homes come with a HBW 2-10 warranty. Certain elevations may have additional fees. Prices may not include lot premiums, upgrades, and options. Inventory home completion date may vary. All prices subject to change without notice. All plans are property of ICI Homes and cannot be copied or used without permission. Prices, promotions, incentives, features, options, amenities, floor plans, elevations, site maps, designs, materials, and dimensions are for illustrative purposes only and subject to change without notice. Plans should not be relied upon as representation express or implied of final sizes, locations, features or dimensions. Square footage and dimensions are estimated and may vary from description. All HERS ratings and savings are calculated by a third party energy rating service. Actual savings will depend on a number of factors, including but not limited to daily activities, home maintenance practices, household size, use of appliances, lighting and internal climate control systems, lot orientation, and surrounding climate and weather conditions. Created on 07/05/2026: \_\_\_\_\_ Garage Orientation R / L: \_\_\_\_\_

