



## THE PRIMROSE at PERSIMMON PARK

THE PRIMROSE - COASTAL

**4 Bedrooms • 3 Bathrooms • 2-Car Garage • 2,434 ft<sup>2</sup> Living Area • 3,219 ft<sup>2</sup> Under Roof**

Welcome to the Primrose, a two-story gem designed for comfort and versatility. This four-bedroom, three-bathroom floor plan offers a spacious living room filled with natural light and a kitchen that's the heart of the home, complete with a central island perfect for gathering. The main floor features a luxurious master suite, while the upstairs offers a game room and additional bedrooms, ideal for family or guests. With ICI Homes' customizable options, you can tailor every aspect to suit your lifestyle, from an extended lanai to personalized room configurations. This is a home where every detail is crafted for you.

\* Renderings may vary from actual home. Please see disclaimer for more details.

**\$1,538**

**ESTIMATED SAVINGS**



This home has a HERS Score of 55 and is estimated to save you \$2,842 on your annual utility bills vs. a resale home.

# THE PRIMROSE

4 Bedrooms • 3 Bathrooms • 2-Car Garage

**Persimmon Park** Available In  
Wesley Chapel, FL Persimmon Park

Living Area: 2,434 ft<sup>2</sup> Under Roof: 3,219 ft<sup>2</sup>

## THE WEST INDIES



## THE CRAFTSMAN



## THE FARMHOUSE



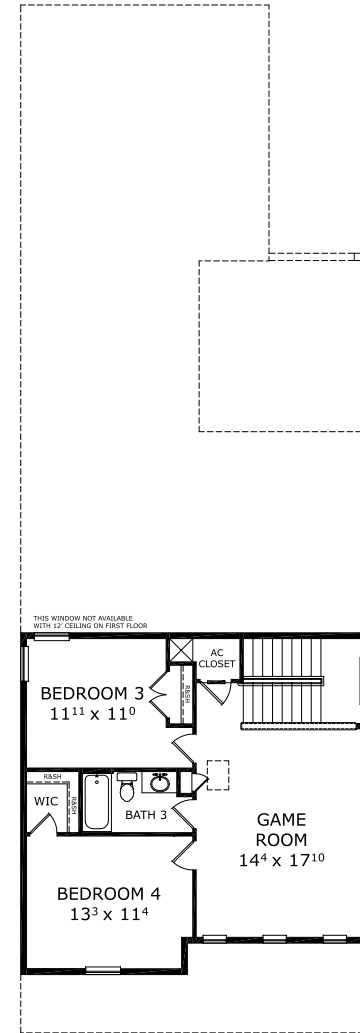
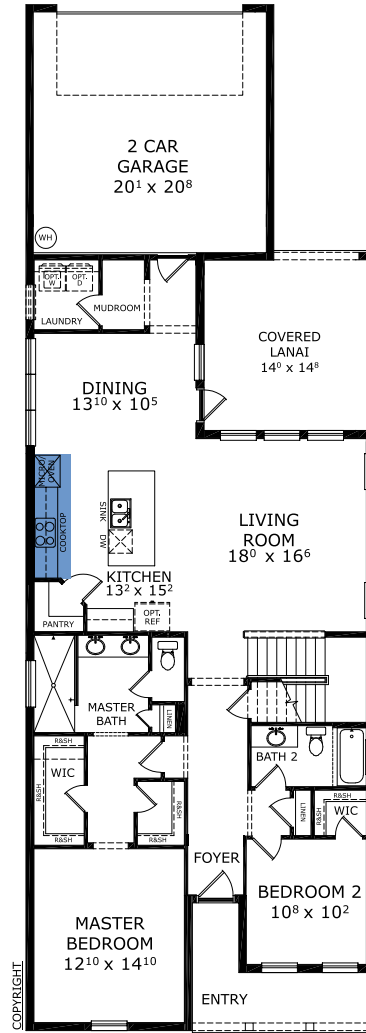
## THE FLORIDA TRADITIONAL



## THE TRANSITIONAL



## FIRST-SECOND FLOOR



Customize this plan, it's easy! (844) 349-6401 or visit [ICIHomes.com](http://ICIHomes.com)

©1994-2026 ICI Homes™ is a registered trademark whose divisions operate under CBC1267313, CBC1262114, CBC1262120, CBC1264300, CBC1265743, CRC1333091, and CBC1257263. Features may be plan specific and vary. Please consult a Sales Associate for specific feature information. All new ICI Homes come with a HBW 2-10 warranty. Certain elevations may have additional fees. Prices may not include lot premiums, upgrades, and options. Inventory home completion date may vary. All prices subject to change without notice. All plans are property of ICI Homes and cannot be copied or used without permission. Prices, promotions, incentives, features, options, amenities, floor plans, elevations, site maps, designs, materials, and dimensions are for illustrative purposes only and subject to change without notice. Plans should not be relied upon as representation express or implied of final sizes, locations, features or dimensions. Square footage and dimensions are estimated and may vary from description. All HERS ratings and savings are calculated by a third party energy rating service. Actual savings will depend on a number of factors, including but not limited to daily activities, home maintenance practices, household size, use of appliances, lighting and internal climate control systems, lot orientation, and surrounding climate and weather conditions. Created on 06/29/2026: \_\_\_\_\_ Garage Orientation R / L: \_\_\_\_\_

