



THE DAVENPORT at OAKMONT

THE DAVENPORT - FARMHOUSE MODERN

4 Bedrooms • 3 Bathrooms • 3-Car Garage • 2,537 ft² Living Area • 3,462 ft² Under Roof

The Davenport is a spacious home with four bedrooms, three bathrooms designed for comfort and style. Its open-concept kitchen, dining, and living areas create an inviting space perfect for gatherings, with large sliding doors leading to a covered lanai that extends your living space outdoors. The private master suite offers a luxurious retreat, a walk-in closet, and a spa-inspired bathroom. Three additional bedrooms are situated at the front, providing a flexible layout. With ICI Homes' customization options, the Davenport can be tailored to fit your unique lifestyle and needs beautifully.

* Renderings may vary from actual home. Please see disclaimer for more details.

\$1,343

ESTIMATED SAVINGS



This home has a HERS Score of 56 and is estimated to save you \$2,531 on your annual utility bills vs. a resale home.

THE DAVENPORT

4 Bedrooms • 3 Bathrooms • 3-Car Garage

Oakmont
Gainesville, FL

Available In
Oakmont 65

Living Area: 2,537 ft² **Under Roof:** 3,462 ft²

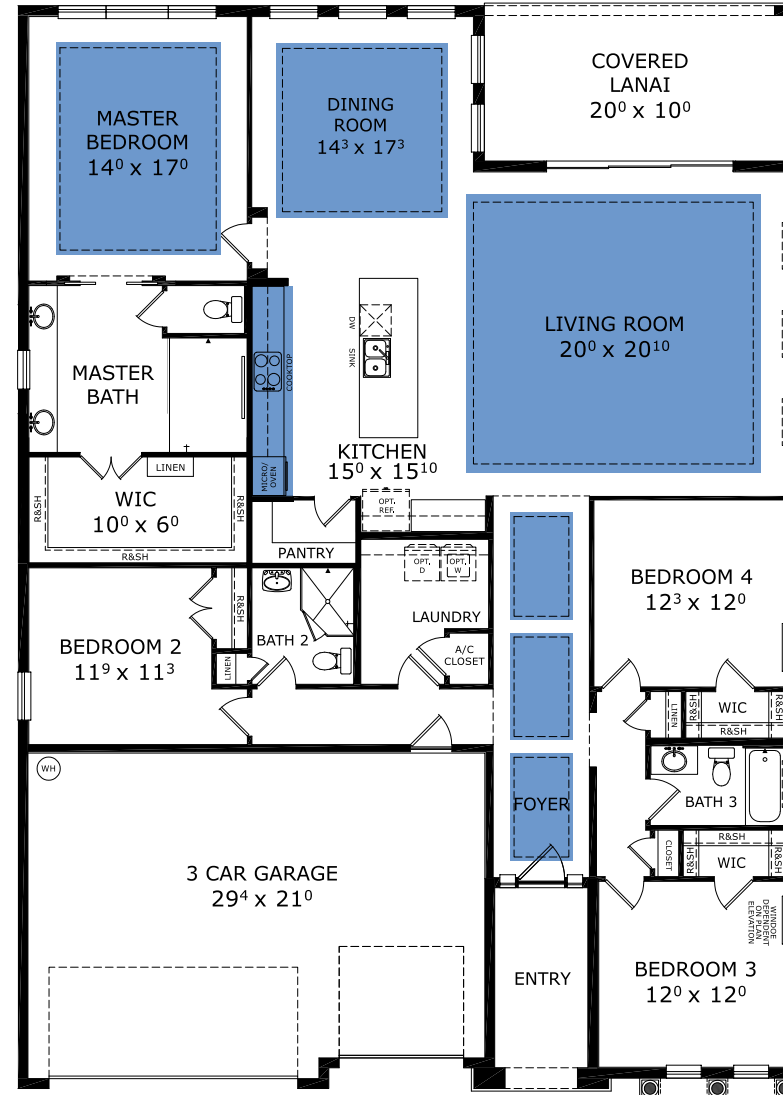
THE WEST INDIES - SIDING



THE CRAFTSMAN MODERN



FIRST FLOOR



Customize this plan, it's easy! (844) 349-6401 or visit [ICIHomes.com](https://www.ICIHomes.com)

©1994-2026 ICI Homes™ is a registered trademark whose divisions operate under CBC1267313, CBC1262114, CBC1262120, CBC1264300, CBC1265743, CRC1333091, and CBC1257263. Features may be plan specific and vary. Please consult a Sales Associate for specific feature information. All new ICI Homes come with a HBW 2-10 warranty. Certain elevations may have additional fees. Prices may not include lot premiums, upgrades, and options. Inventory home completion date may vary. All prices subject to change without notice. All plans are property of ICI Homes and cannot be copied or used without permission. Prices, promotions, incentives, features, options, amenities, floor plans, elevations, site maps, designs, materials, and dimensions are for illustrative purposes only and subject to change without notice. Plans should not be relied upon as representation express or implied of final sizes, locations, features or dimensions. Square footage and dimensions are estimated and may vary from description. All HERS ratings and savings are calculated by a third party energy rating service. Actual savings will depend on a number of factors, including but not limited to daily activities, home maintenance practices, household size, use of appliances, lighting and internal climate control systems, lot orientation, and surrounding climate and weather conditions. Created on 07/05/2026: _____ Garage Orientation R / L: _____

