



THE ARBOR III at PLANTATION BAY

THE UNA **MODEL**

2 Bedrooms • 2 Bathrooms • 2-Car Garage • 1,643 ft² Living Area • 2,323 ft² Under Roof

Welcome to the Arbor III — a home where thoughtful design meets endless flexibility. Enter through a welcoming foyer into a bright, open layout, with a flexible room ready to become a home office, cozy library, or extra bedroom. The heart of the home connects the dining area, kitchen, and living room, which flows seamlessly onto a covered lanai, perfect for enjoying Florida's sunny days. The master suite is a private retreat with a spacious walk-in closet and en-suite bath, while the second bedroom and nearby bath offer comfort for guests. With a two-car garage and extra storage, the Arbor III is both elegant and functional.

* Renderings may vary from actual home. Please see disclaimer for more details.

\$839

ESTIMATED SAVINGS



This home has a HERS Score of 66 and is estimated to save you \$1,856 on your annual utility bills vs. a resale home.

THE ARBOR III

2 Bedrooms • 2 Bathrooms • 2-Car Garage

MODEL

Plantation Bay

Townhome Series | Westlake - Lot 132

15 Southampton Street
Ormond Beach, FL, 32174

Living Area: 1,643 ft²

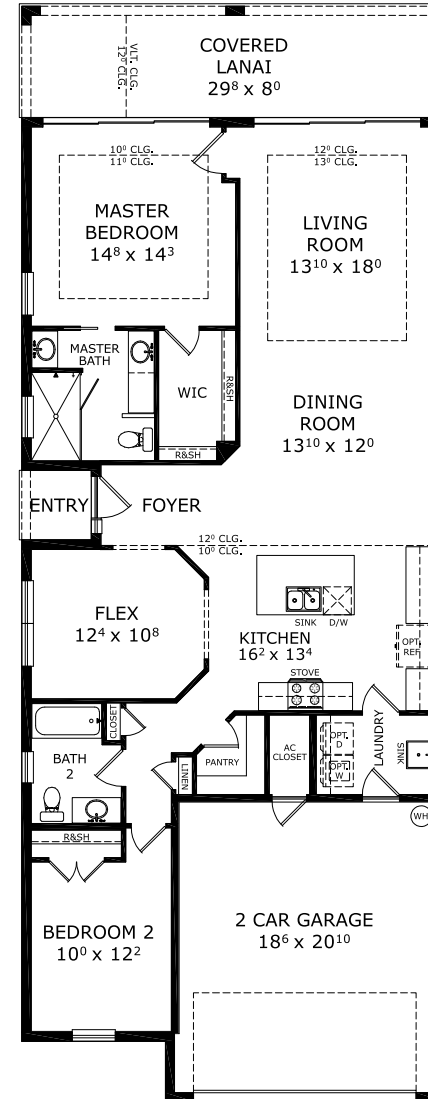
Structural Options Included in This Home:

- ✓ Tray Ceiling - Living Room
- ✓ Tray Ceiling - Master Suite
- ✓ Laundry Sink Rough In
- ✓ Modified Interior Spec Package

And much more....

From: **\$403,900**

FIRST FLOOR



This Arbor III is a Model! [Speak to a Sales Counselor \(844\) 349-6401](https://www.icihomes.com) or visit [ICIHomes.com](https://www.icihomes.com)

©1994-2026 ICI Homes™ is a registered trademark whose divisions operate under CBC1267313, CBC1262114, CBC1262120, CBC1264300, CBC1265743, CRC1333091, and CBC1257263. Features may be plan specific and vary. Please consult a Sales Associate for specific feature information. All new ICI Homes come with a HBW 2-10 warranty. Certain elevations may have additional fees. Prices may not include lot premiums, upgrades, and options. Inventory home completion date may vary. All prices subject to change without notice. All plans are property of ICI Homes and cannot be copied or used without permission. Prices, promotions, incentives, features, options, amenities, floor plans, elevations, site maps, designs, materials, and dimensions are for illustrative purposes only and subject to change without notice. Plans should not be relied upon as representation express or implied of final sizes, locations, features or dimensions. Square footage and dimensions are estimated and may vary from description. All HERS ratings and savings are calculated by a third party energy rating service. Actual savings will depend on a number of factors, including but not limited to daily activities, home maintenance practices, household size, use of appliances, lighting and internal climate control systems, lot orientation, and surrounding climate and weather conditions. Created on 07/06/2026: _____ Garage Orientation R / L: _____

